



MONTHLY MEMBERSHIP PROGRESS REPORT

District 27 C1

Results as of: 06/30/2019

GMT: OPEN

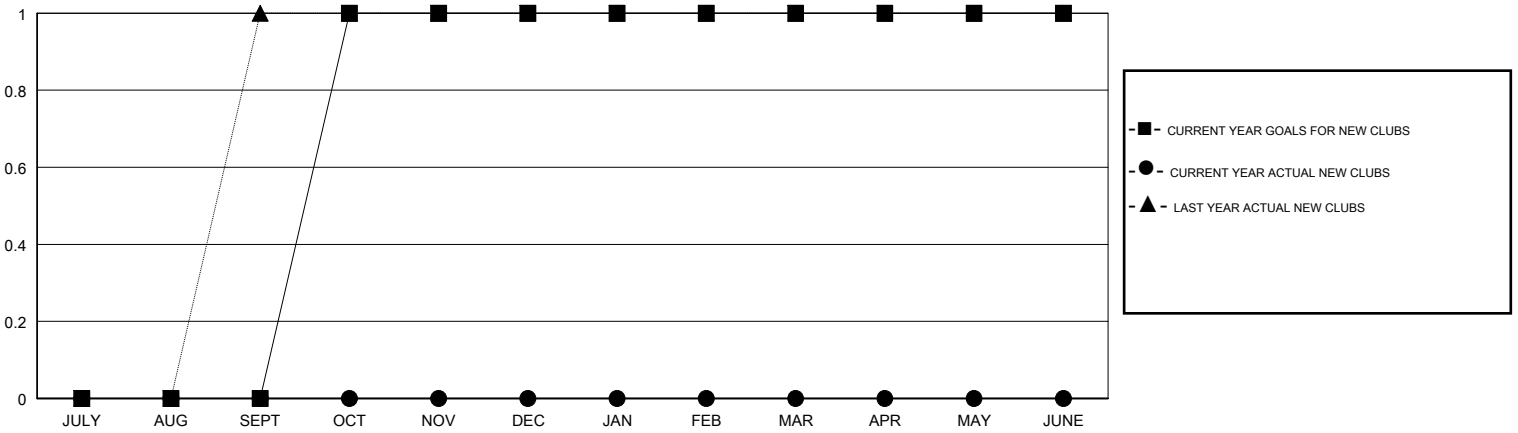
LOCATION WISCONSIN

GMT CA

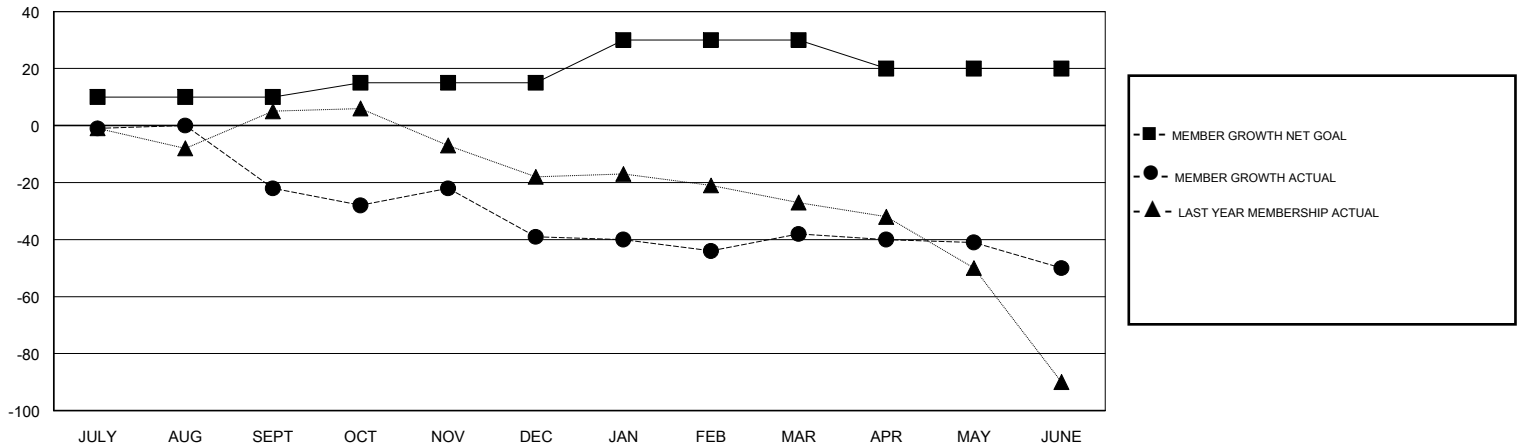
Clubs			
RESULTS FOR 2018-2019			
QUARTER	NEW CLUB GOAL	NEW CLUBS	DROPPED CLUBS
JULY/AUG/SEPT	0	0	2
OCT/NOV/DEC	1	0	0
JAN/FEB/MAR	0	0	0
APR/MAY/JUNE	0	0	1

Members			
RESULTS FOR 2018-2019			
QUARTER	MEMBER GROWTH NET GOAL	MEMBER GROWTH ACTUAL	DROPPED MEMBERS ACTUAL (including transfers)
JULY/AUG/SEPT	10	27	47
OCT/NOV/DEC	5	13	28
JAN/FEB/MAR	15	24	20
APR/MAY/JUNE	-10	34	45

GOALS AND ACTUAL NEW CLUBS CUMULATIVE



GOALS AND ACTUAL MEMBERS CUMULATIVE



DROPPED CLUBS: 3

31 CLUBS OF 55 ADDED 1 OR MORE NEW MEMBERS

GENDER DISTRIBUTION	
MALE	1,091 (74.57%)
FEMALE	372 (25.43%)
Women Percentage Fiscal Year Goal: 26%	

DROPPED MEMBERS	
DECEASED	17
CLUB CANCELLED	0
OTHER	123
TOTAL	140

[CLICK HERE FOR CUMULATIVE MEMBERSHIP DATA](#)

TOTAL FAMILY UNIT MEMBERS	362
FAMILY MEMBERS PAYING HALF DUES	183